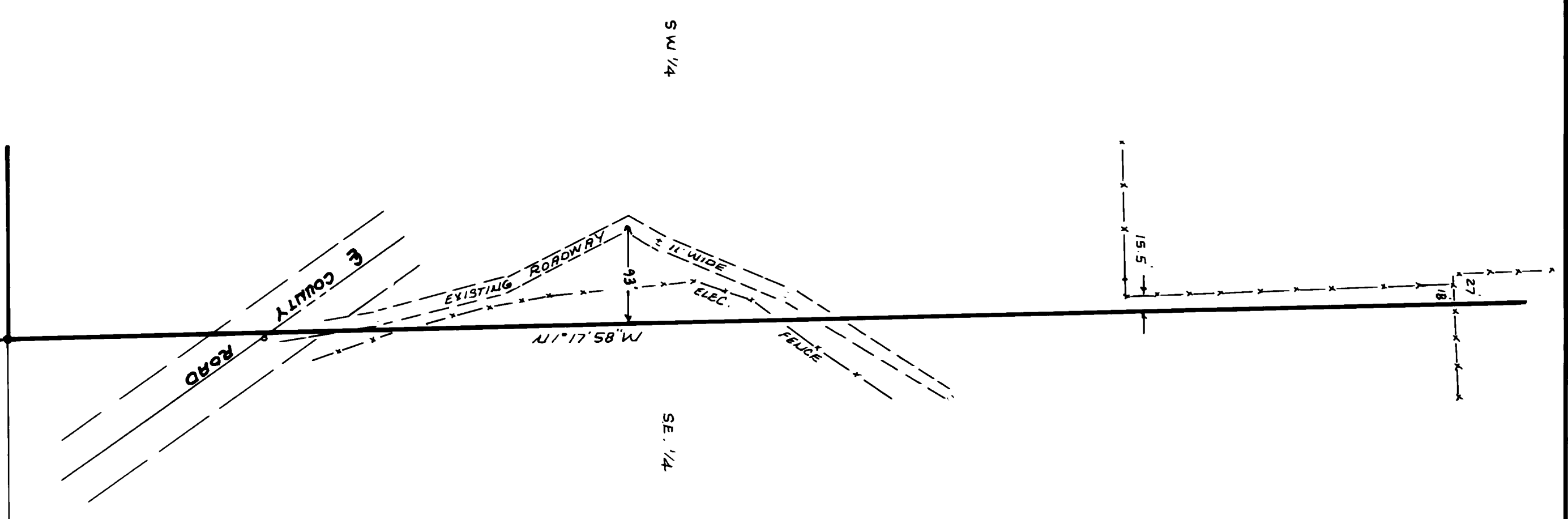
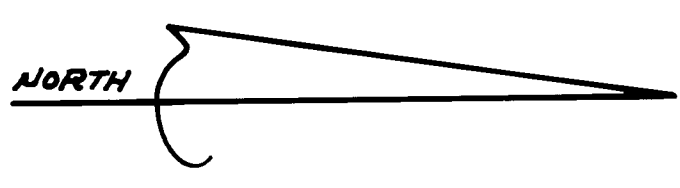
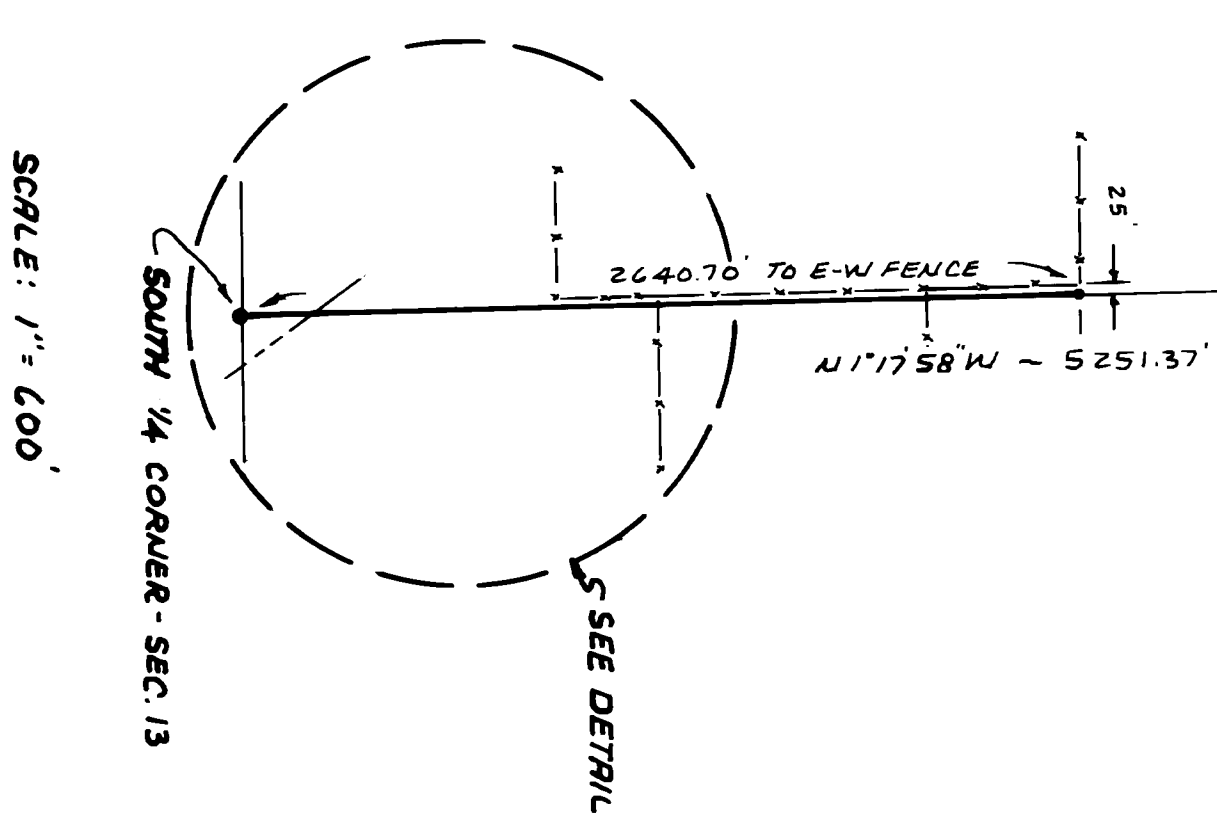


NORTH 1/4 CORNER
CORNER POSITION FALLS IN CULTIVATED FIELD. NOTHING FOUND OR SET. POSITION ESTABLISHED BY SINGLE PROPORTIONATE MEASUREMENT.



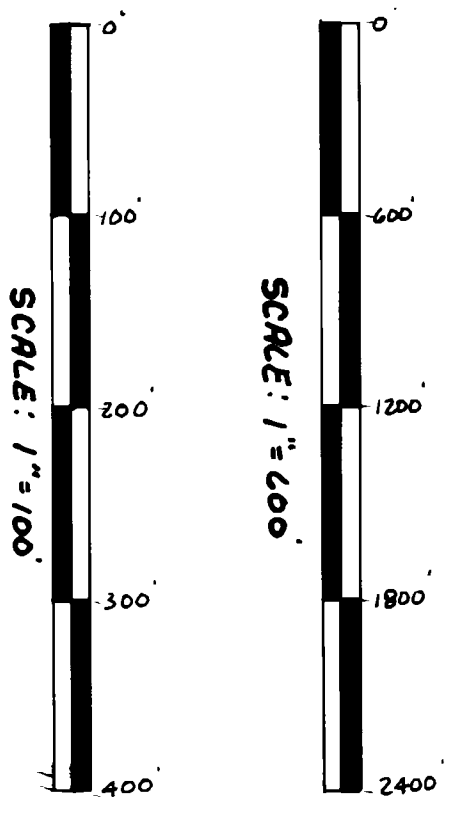
DETAIL
SCALE: 1"=100'

SOUTH 1/4 CORNER
SET 5/8" REBAR WITH 1 1/2" ALUM. CAP IN FOUND REMAINS OF ORIGINAL G.L.O. FIR CORNER TREE. THE STUMP HOLE OF A DOWN 12" TRUNK WITH SCRIBING (1/4 S) BEARS N 70° W ~ 21.8'
NEW B'T'S: 11" FIR BEARS N 31° E ~ 20.1', 12" FIR BEARS S 61° E ~ 12.0', 9" FIR BEARS S 4° W ~ 15.4'



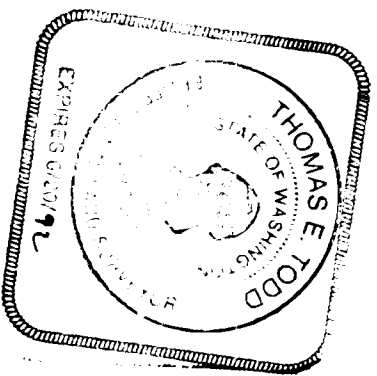
SCALE: 1"=600'

SOUTH 1/4 CORNER - SEC. 13



LEGEND

- SET 5/8" REBAR WITH 1 1/2 ALUM. CAP
 - NO MONUMENT FOUND OR SET
 - FOUND MONUMENT AS INDICATED
 - A—A EXISTING FENCE LINE
 - (....) G.L.O. RECORD DATA
- EQUIP: TOPCON GTS-3D
FIELD TRAV.



SURVEYOR'S CERTIFICATE

THIS MAP CORRECTLY REPRESENTS A SURVEY MADE BY ME OR UNDER MY DIRECTION IN CONFORMANCE WITH THE REQUIREMENTS OF THE SURVEY RECORDING ACT AT THE REQUEST OF TOM McKEERU IN MARCH, 1992.

THOMAS E. TODD, L.S., 19848
790 SOUTH MAIN STREET
COLVILLE, WASHINGTON 99114

RECORD OF SURVEY

OF THE NORTH-SOUTH CENTERLINE OF SECTION 13, T. 34 N., R. 37 E., W.M., STEVENS COUNTY, WASHINGTON

AUDITOR'S CERTIFICATE

FILED FOR RECORD THIS 20th DAY OF April, 1992
AT 2:00 P.M. IN BOOK 12 OF SURVEYS AT PAGE 24
AT THE REQUEST OF THOMAS E. TODD

William E. Prevost
COUNTY AUDITOR

Deanna Flawley
DEPUTY

9203840