

RECORD OF SURVEY
SURVEY AND SUBDIVISION OF SECTION 12, T34N,
R37E, WM, STEVENS COUNTY, WASHINGTON

**T34N
R37E
WM**
Stevens
County

**T34N
R37E
WM**
Stevens
County

**T34N
R38E
WM**
Stevens
County

SECTION CORNER
Found marked stone in place.
See ROS 2-78, 79.

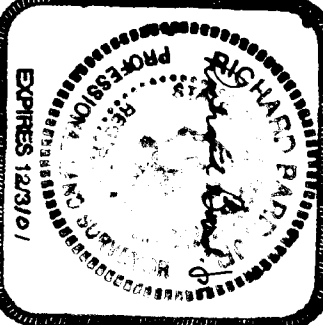
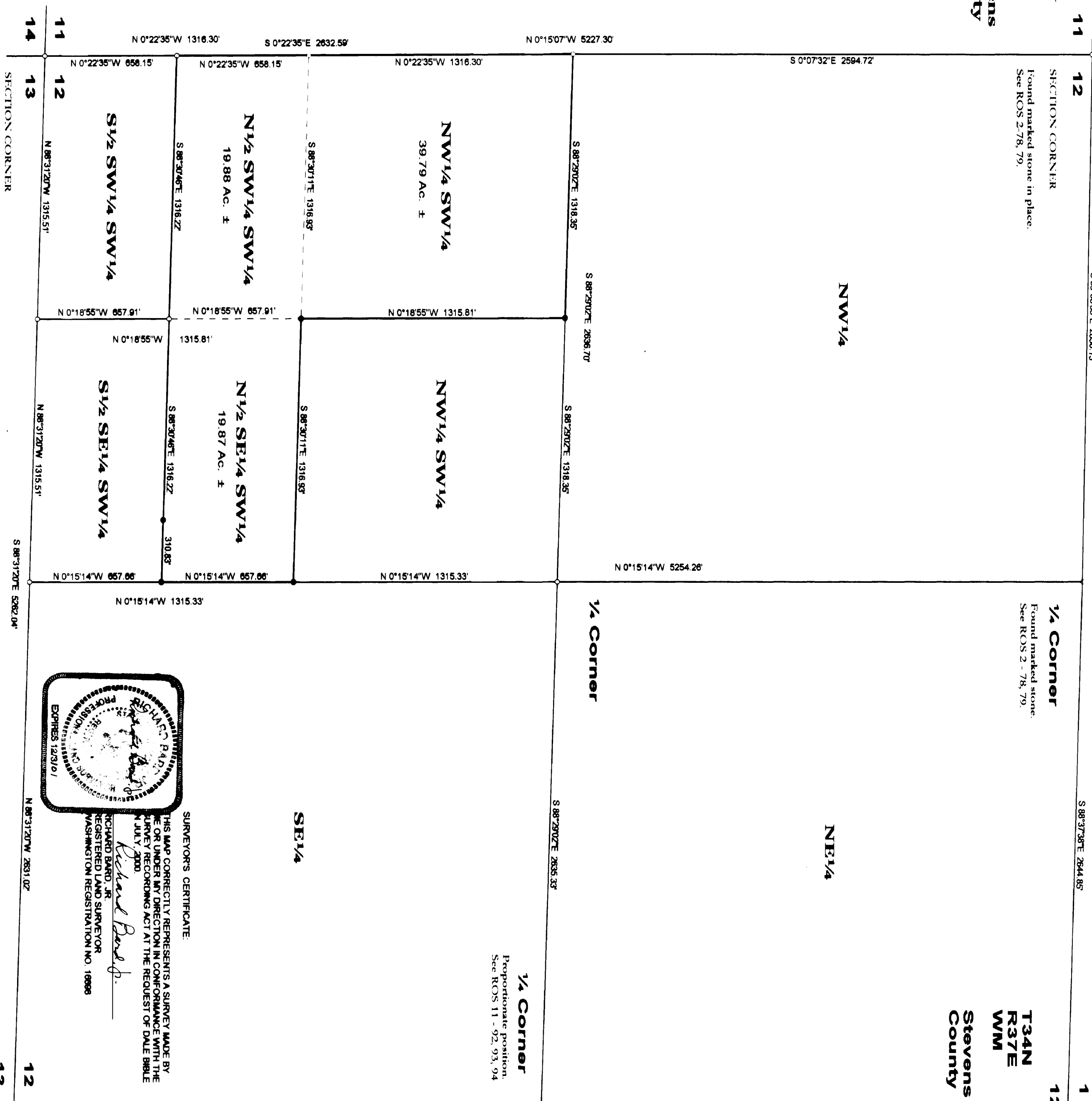
1/4 Corner
Found marked stone.
See ROS 2 - 78, 79.

NORTHEAST CORNER OF SECTION 12
Found 2" brass cap.
See ROS 11 - 92, 93, 94

1/4 Corner
Original corner set in 1978 was found destroyed in center of road. Corner reestablished from found reference monuments with a 3/4" ID galvanized iron pipe with a 2" brass cap in remains of original Corner tree stump down 2".
Cap is marked:
BARD
T34N, R37E
S11 S12
2000
16898
See ROS 2 78, 79.

1/4 Corner

1/4 Corner
Proportional position.
See ROS 11 - 92, 93, 94



SURVEYORS CERTIFICATE:
 THIS MAP CORRECTLY REPRESENTS A SURVEY MADE BY ME OR UNDER MY DIRECTION IN CONFORMANCE WITH THE SURVEY RECORDING ACT AT THE REQUEST OF DALE BIBLE IN JULY, 2000.
 RICHARD BARD, JR.
 REGISTERED LAND SURVEYOR
 WASHINGTON REGISTRATION NO. 18898

REFERENCES:
 Record of Survey Book 2, Surveys, Pages 78 & 79
 Record of Survey Book 11, Surveys, Pages 92, 93, & 94
 Record of Survey Book 11, Surveys, Page 111
 Record of Survey Book 12, Surveys, Page 24
 Record of Survey, Book 18, Surveys, Page 141

LEGEND:
 ROS = Record of Survey
 ID = Inside Diameter

This survey was made with a Topcon GTS-3B total station using field traversing methods with forced centering.
 • = Set 5/8" x 30" rebar with 1 1/2" aluminum cap marked: BARD + 16898
 ○ = No monument found except where noted



August 3, 2000

AUDITOR'S CERTIFICATE:
 FILED FOR RECORD THIS 7TH DAY OF September, 2000, AT 6:25 P. M. IN BOOK 20 OF SURVEYS AT PAGE 147, AT THE REQUEST OF RICHARD BARD, JR.
 DOCUMENT NO. 20000008661
 FEE 25.00 CS 2.00
 DMR 26.00 SA 1.00
 BY Tom Gray REGISTERED LAND SURVEYOR
 BY F. Clinton DEPUTY

RECORD OF SURVEY

C:\SGHTSR\WMBLE\ES12.ZAK
 1/4 SECT R
 12 34N 37E

61250043413