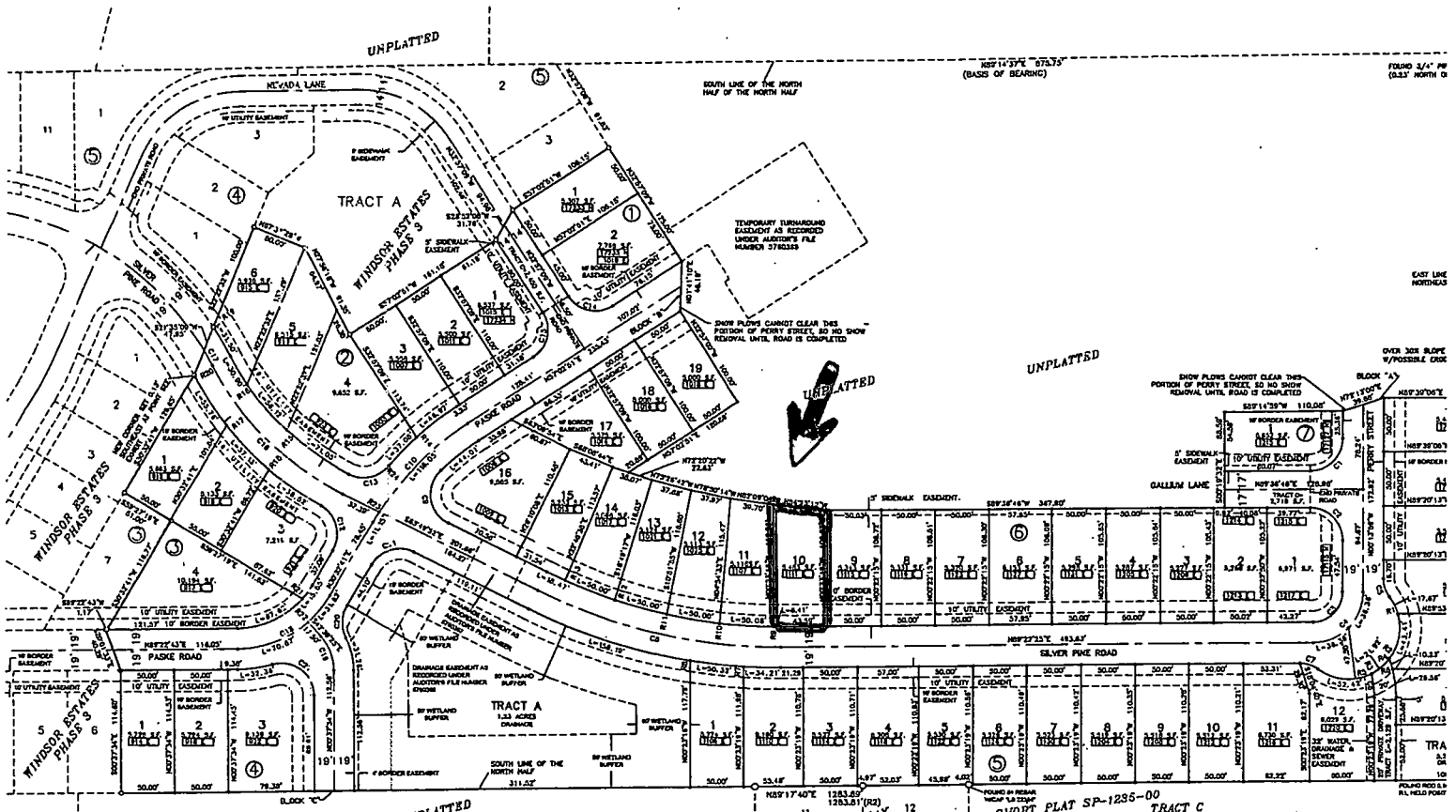


FINAL PLAT WINDSOR ESTATES EAST

A PORTION OF THE NW 1/4 AND NE 1/4 OF THE NE 1/4
SECTION 29 TOWNSHIP 27 NORTH, RANGE 43 EAST, W.M.
SPOKANE COUNTY, WASHINGTON

SPOKA
FILED FOR I
THE O.C.D.
THE RECORD
[Signature]

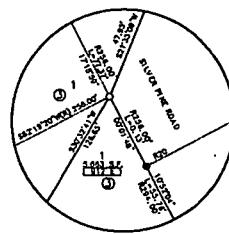


CURVE TABLE

STATION	CHORD BEARING	CHORD DISTANCE	ARC BEARING	ARC DISTANCE	CHORD BEARING	CHORD DISTANCE	ARC BEARING	ARC DISTANCE
1+00.00	N 89° 17' 40" E	1283.89	173° 52' 10"	1283.89	S 89° 17' 40" W	1283.89	173° 52' 10"	1283.89
1+31.19	N 89° 17' 40" E	1283.89	173° 52' 10"	1283.89	S 89° 17' 40" W	1283.89	173° 52' 10"	1283.89
1+62.38	N 89° 17' 40" E	1283.89	173° 52' 10"	1283.89	S 89° 17' 40" W	1283.89	173° 52' 10"	1283.89
1+93.57	N 89° 17' 40" E	1283.89	173° 52' 10"	1283.89	S 89° 17' 40" W	1283.89	173° 52' 10"	1283.89
2+24.76	N 89° 17' 40" E	1283.89	173° 52' 10"	1283.89	S 89° 17' 40" W	1283.89	173° 52' 10"	1283.89
2+55.95	N 89° 17' 40" E	1283.89	173° 52' 10"	1283.89	S 89° 17' 40" W	1283.89	173° 52' 10"	1283.89
2+87.14	N 89° 17' 40" E	1283.89	173° 52' 10"	1283.89	S 89° 17' 40" W	1283.89	173° 52' 10"	1283.89
3+18.33	N 89° 17' 40" E	1283.89	173° 52' 10"	1283.89	S 89° 17' 40" W	1283.89	173° 52' 10"	1283.89
3+49.52	N 89° 17' 40" E	1283.89	173° 52' 10"	1283.89	S 89° 17' 40" W	1283.89	173° 52' 10"	1283.89
3+80.71	N 89° 17' 40" E	1283.89	173° 52' 10"	1283.89	S 89° 17' 40" W	1283.89	173° 52' 10"	1283.89
4+11.90	N 89° 17' 40" E	1283.89	173° 52' 10"	1283.89	S 89° 17' 40" W	1283.89	173° 52' 10"	1283.89
4+43.09	N 89° 17' 40" E	1283.89	173° 52' 10"	1283.89	S 89° 17' 40" W	1283.89	173° 52' 10"	1283.89
4+74.28	N 89° 17' 40" E	1283.89	173° 52' 10"	1283.89	S 89° 17' 40" W	1283.89	173° 52' 10"	1283.89
5+05.47	N 89° 17' 40" E	1283.89	173° 52' 10"	1283.89	S 89° 17' 40" W	1283.89	173° 52' 10"	1283.89
5+36.66	N 89° 17' 40" E	1283.89	173° 52' 10"	1283.89	S 89° 17' 40" W	1283.89	173° 52' 10"	1283.89
5+67.85	N 89° 17' 40" E	1283.89	173° 52' 10"	1283.89	S 89° 17' 40" W	1283.89	173° 52' 10"	1283.89
6+00.00	N 89° 17' 40" E	1283.89	173° 52' 10"	1283.89	S 89° 17' 40" W	1283.89	173° 52' 10"	1283.89

RADIAL LINE TABLE

STATION	CHORD BEARING	CHORD DISTANCE	ARC BEARING	ARC DISTANCE
1+00.00	N 89° 17' 40" E	1283.89	173° 52' 10"	1283.89
1+31.19	N 89° 17' 40" E	1283.89	173° 52' 10"	1283.89
1+62.38	N 89° 17' 40" E	1283.89	173° 52' 10"	1283.89
1+93.57	N 89° 17' 40" E	1283.89	173° 52' 10"	1283.89
2+24.76	N 89° 17' 40" E	1283.89	173° 52' 10"	1283.89
2+55.95	N 89° 17' 40" E	1283.89	173° 52' 10"	1283.89
2+87.14	N 89° 17' 40" E	1283.89	173° 52' 10"	1283.89
3+18.33	N 89° 17' 40" E	1283.89	173° 52' 10"	1283.89
3+49.52	N 89° 17' 40" E	1283.89	173° 52' 10"	1283.89
3+80.71	N 89° 17' 40" E	1283.89	173° 52' 10"	1283.89
4+11.90	N 89° 17' 40" E	1283.89	173° 52' 10"	1283.89
4+43.09	N 89° 17' 40" E	1283.89	173° 52' 10"	1283.89
4+74.28	N 89° 17' 40" E	1283.89	173° 52' 10"	1283.89
5+05.47	N 89° 17' 40" E	1283.89	173° 52' 10"	1283.89
5+36.66	N 89° 17' 40" E	1283.89	173° 52' 10"	1283.89
5+67.85	N 89° 17' 40" E	1283.89	173° 52' 10"	1283.89
6+00.00	N 89° 17' 40" E	1283.89	173° 52' 10"	1283.89



ACKNOWLEDGEMENT
 I, MEMBER GROUP, THE AFORESAID OWNER HAS CAUSED ME/HIS/HER NAME TO BE MENTIONED SUBSCRIBER THIS 31ST DAY OF September 2016.
 HANCOCK DEVELOPMENT LLC, A WASHINGTON LIMITED LIABILITY COMPANY.
 BY: [Signature] its member
 ACKNOWLEDGERS
 STATE OF WASHINGTON) SS
 COUNTY OF SPOKANE)
 I CERTIFY THAT I KNOW OR THAT I HAVE SUFFICIENT EVIDENCE THAT TRAVIS FROST IS THE PERSON WHO APPEARED BEFORE ME, AND SAID PERSON ACKNOWLEDGED THAT HE/SHE SIGNED THIS INSTRUMENT, ON OATH STATED THAT HE/SHE WAS AWARENESS TO EXECUTE THE INSTRUMENT AND ACKNOWLEDGED IT IN THE PRESENCE OF ME, HANCOCK DEVELOPMENT LLC, A WASHINGTON LIMITED LIABILITY COMPANY, TO BE THE FREE AND VOLUNTARY ACT OF SUCH CORPORATION FOR THE USES AND PURPOSES STATED IN THE INSTRUMENT.
 DATED THIS 31ST DAY OF September 2016.
[Signature]
 COUNTY CLERK
 COUNTY OF SPOKANE, WASHINGTON
 MY COMMISSION EXPIRES 10/1/2018.



FIELD SK
 DATE:
 DRAWN:
 REVIEWED:

This sketch is furnished as a courtesy only by First American Title Insurance Company and is NOT a part of any title commitment or policy of title insurance. This sketch is furnished solely for the purpose of assisting in locating the premises and does not purport to show all highways, roads or easements affecting the property. No reliance should be placed upon this sketch for the location or dimensions of the property and no liability is assumed for the correctness thereof.