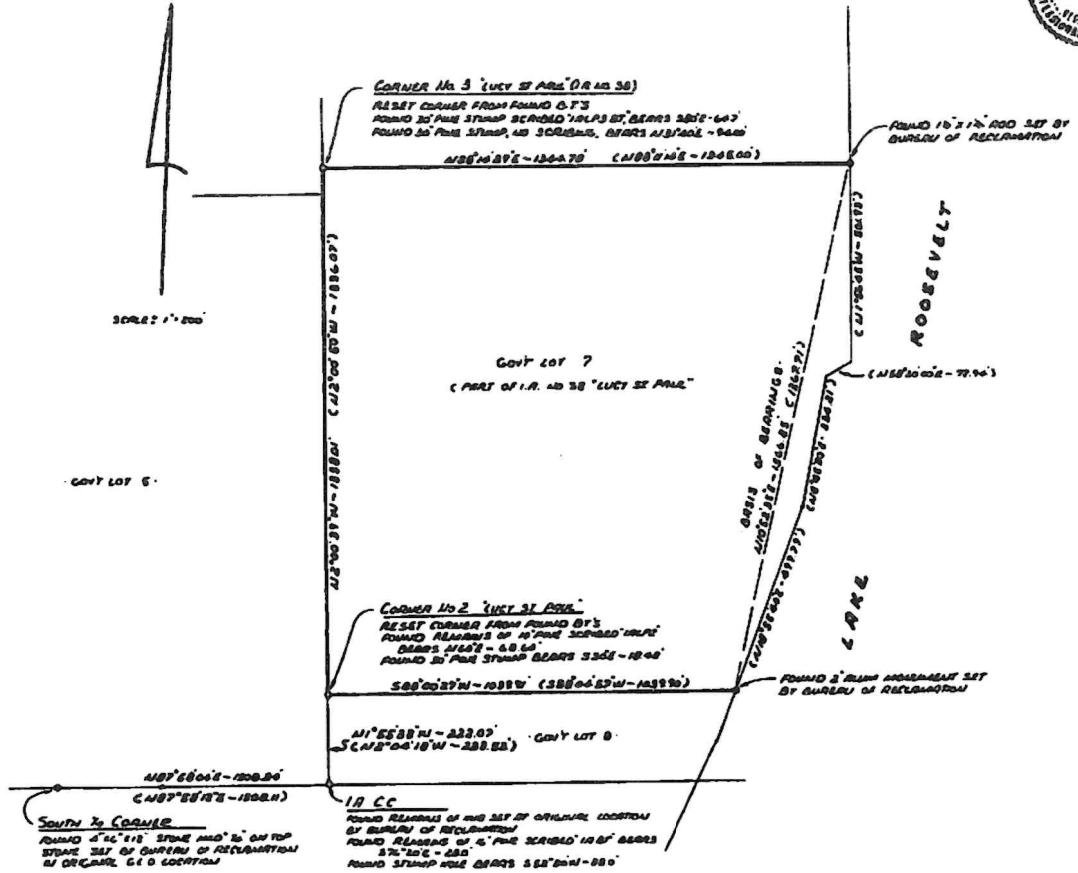


199512

199512

GOVT LOT 6



**SURVEYOR'S CERTIFICATE**

THIS MAP CORRECTLY REPRESENTS A SURVEY MADE BY ME OR UNDER MY DIRECTION IN CONFORMANCE WITH THE REQUIREMENTS OF THE SURVEY ACT AT THE REQUEST OF ROY BARTON IN JULY 1905

T. TODD  
THOMAS E. TODD  
L.S. 19648

199512

**AUDITOR'S CERTIFICATE**

FILED FOR RECORD THIS 19th DAY OF JAN 1905 BY W.S. B.M. OF BOOK 32 OF SURVEYS AT PAGE 13 AT THE REQUEST OF THOMAS E. TODD

William E. Montague  
COUNTY AUDITOR

**BASIS OF BEARINGS**

THE BEARINGS AND DISTANCES AS CALCULATED FROM FOUND MONUMENTS AS SHOWN ON THIS MAP OF U.S.B.R. BOUNDARY - RIGHT ABOUT, OF 1888 AT THE GRAND COUNCIL OFFICE OF U.S.B.R., IS THE BASIS OF BEARINGS SHOWN ON THIS MAP.

**LEGEND**

- SET BY RODER WITH 1 1/2" PLAIN CAP T. TODD L.S. 19648
- FOUND MONUMENT AS INDICATED
- (.....) RECORD DATA

**Note**

SECTION 38 OF 36 "LUCY ST PAUL" WAS ORIGINALLY SURVEYED IN 1877, G.L.O. PLAT DESIGNATING TRIBAL LANDS BY NEW LOT NUMBERS ACCEPTED IN 1912. IN THE EARLY 1920'S THE BUREAU OF RECLAMATION REESTABLISHED THE BOUNDARY OF GOVT LOT 7 (A PORTION OF 1/4 38)

**RECORD OF SURVEY**

IN GOVT LOT 7 OF SECTION 9, T. 55N., R. 37E., W.M., FERRY COUNTY, WA.