

Short Plat by Survey SP 18-2021

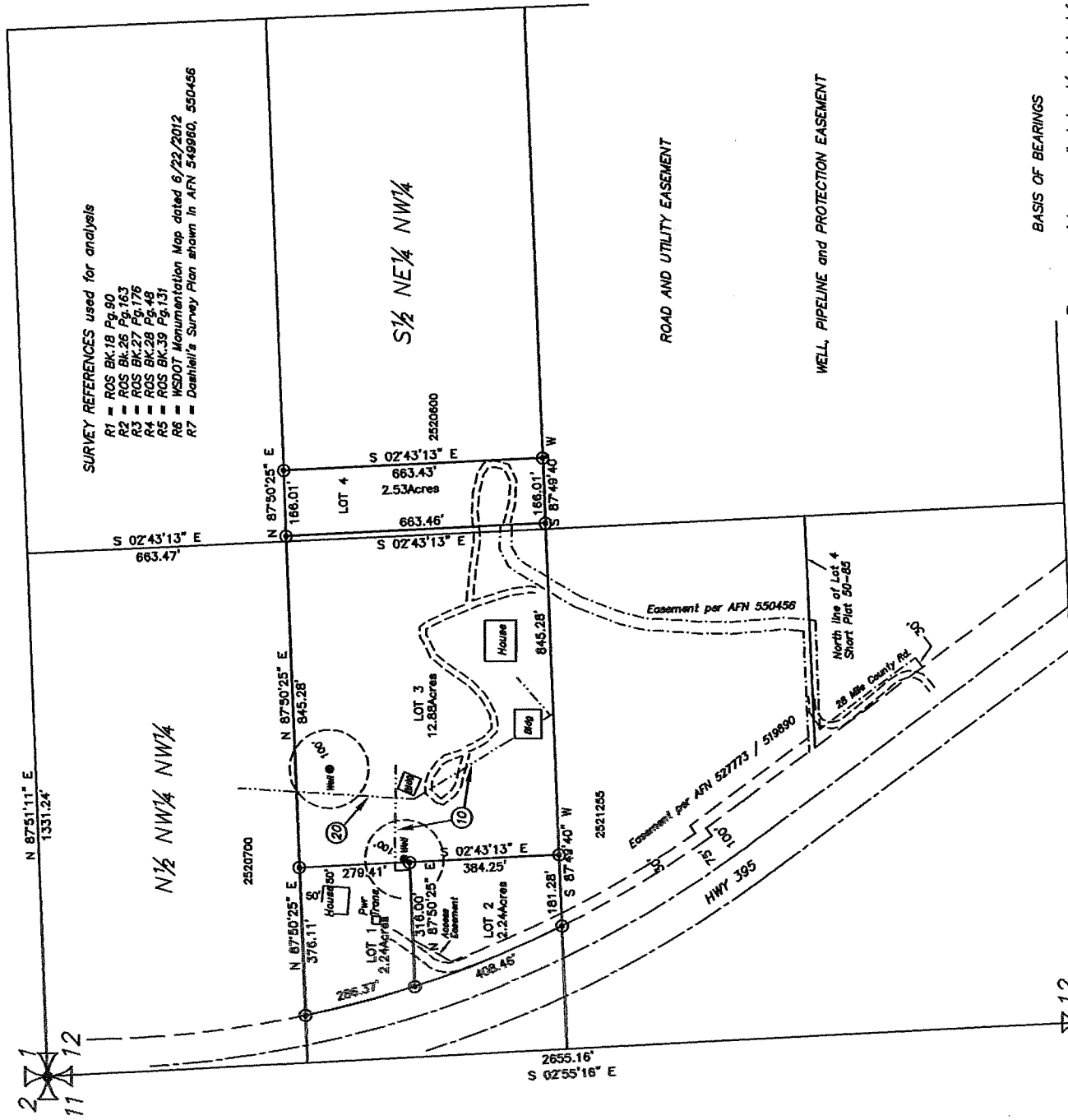
In the NW¼ of NW¼ and NE¼ of the NW¼
Section 12 T.31N., R.40E. W.M.
STEVENS COUNTY, WA.

EQUIPMENT & PROCEDURES

This Survey was performed using a GNSS GPS Receiver with RTK and NGS OPUS methods. Redundant measurement using re-initialization and multiple measurements with error ellipses not greater than .05" was achieved. Methods used comply with State Law including WAC 332-130-90 & WAC 332-130-100.

- ⑩ = 10' wide Avista Utility Easement 5' on either side of the facilities as constructed
- ⑳ = 20' wide Avista Utility Easement 10' on either side of the overhead line as constructed
- Found corner monument as noted
- Computed point, not set this survey
- ⊙ Set 1/2" rebar & cap. PLS 36037

LEGEND



SURVEYOR'S NARRATIVE

The Section Breakdown was calculated per References as shown hereon. Monuments as shown were found and verified and were accepted. The Legal Description on the Parent Parcel is as per Stevens County Title Co. Plat Certificate Order No.157386.

LEGAL DESCRIPTIONS

1/2 NE¼ NW¼

1/2 NW¼ NW¼

ROAD AND UTILITY EASEMENT

WELL, PIPELINE and PROTECTION EASEMENT

WELL, PIPELINE and PROTECTION EASEMENT

BASIS OF BEARINGS

The survey points were collected and/or derived from GPS Grid Bearings
 NSRS NAD 83-2011 Epoch 2010 Washington North Zone.
 The convergence, or difference between Grid North and Geodetic North is 2'26"07.06".
 See Equipment and Procedures for more information.



PRELIMINARY

Todd J. Emerson PLS



Short Plat of SP 18-2021

EMERSON SURVEYING
 17010 N Tamarac Lane
 Nine Mile Falls, WA 99026
 (509) 754-7999

PROJECT NUMBER: 2021-047
 SCALE: 1" = 200'
 PLAT DATE: _____

11 12